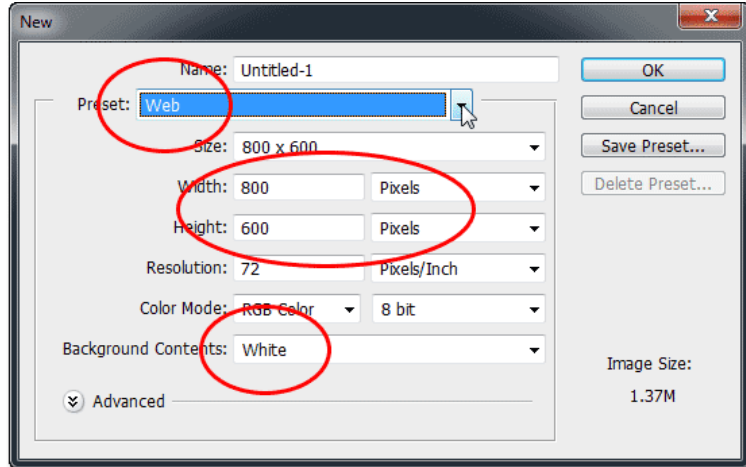


Photoshop Multiple Choice Test Dec. 2014- On Line Answer Sheet

1. What does resolution mean?

It refers to the # of pixels that describe an image and establish it's detail.

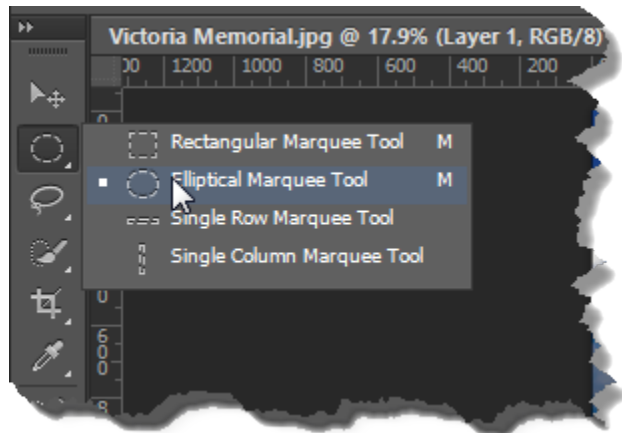


2. What is PPI?

Pixels Per Inch

3. What are BITMAP or Raster Images??

They are images that have data that describe the color of each pixel. They cannot be rescaled without resulting in "pixelation", or loss of definition in the details.



4. What does making a "selection mean in Photoshop?

It means to choose or "select" a portion of an image you want to work on.....

5. What is "Opacity" in Photoshop?

How visible a layer is-- and the ability to see through a layer

6. What is a " Marquee Selection" in Photoshop?

a dashed line that encloses the area you want to edit or move to another images-"marching ants"

7. Flattening in Photoshop means to do what?

it means to merge all visible layers into a single background layer and discards all hidden layers

8. What does "deselect" mean in Photoshop?

A command that removes the marquee from an area, so it is no longer selected.,,the marching ants are gone....

9. What are Guides in Photoshop?

Horizontal And Vertical Lines That You Create To Help You Align Objects

10. What is a "Pixel?"

very small squares that make up an image; each dot in a bitmapped image that represents a color or shade.

11. What are "Handles" in Photoshop?

Small boxes that appear around an object when it is selected

12. What are "Filters" in Photoshop?

used to alter the look of an image and give it a different appearance by applying special effects

13. What is a "Gradient" in Photoshop?

A type of fill in which one color appears to blend into another color

14. What is Foreground color In PS?

black by default and is used to paint fill to a selection.

15. We use the "Magic Wand" tool In Photoshop to do what?

The Magic Wand makes "selections" based on the COLOR you are trying to isolate or remove

16. The "Quick Selection" tool does what in PS?

Lets you **quickly "paint"** a selection using an adjustable brush

17. What are the "LASSO TOOLS" used for in Photoshop?

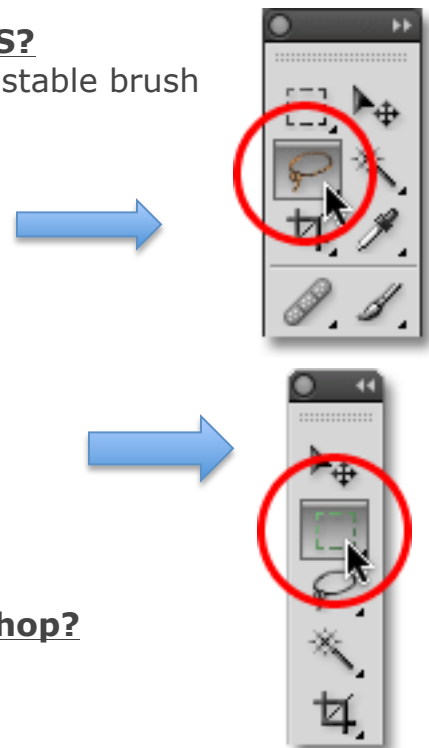
Makes freehand, polygonal (straight-edged), and magnetic (snap-to) selection

18. "Marquee" tools do what in PS?

Makes rectangular, elliptical, single row, and single column **selections**

19. What does the "BRUSH" tool do in Photoshop?

paints brush strokes



20. What does the "Eraser" tool do in Photoshop?

removes/deletes pixels and restores parts of an image to a previously saved state

21. What does the "ZOOM" tool do in Photoshop?

magnifies and reduces the view of an image

22. The "Crop" tool does what in PS?

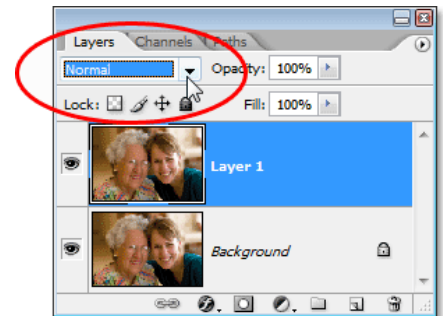
trims images to any size you like

23. What does the "PAINT BUCKET" do in PS?

fills selected areas with the foreground color

24. What are "layer blend modes"?

Layer blend modes give us different ways for a layer to interact with, or "blend" with, the layer or layers below it.



25. Explain now after a semester, what is your experience level on a scale of 1-10 with using Photoshop?

What is your comfort level with Photoshop?

Answer in a paragraph or more please...

Reflect on where you started in this class, and where you are at now....